



MIDDLE EAST & NORTH AFRICA
LEARNING HUB



GC8 Fact Sheets

GC8 Strategic shifts

In the context of an evolving global health ecosystem and significant constraints in external financing for health, the Global Fund partnership will need to work differently to accelerate progress, raise additional domestic financing for health and ensure a focus on sustainable approaches for delivery of health interventions. Accordingly, the Global Fund is adapting its approach for GC8 to catalyze the greatest impact based on country context, while reinforcing sustainability and effective transitions from external financing.

These [strategic adaptations](#) for GC8 include:

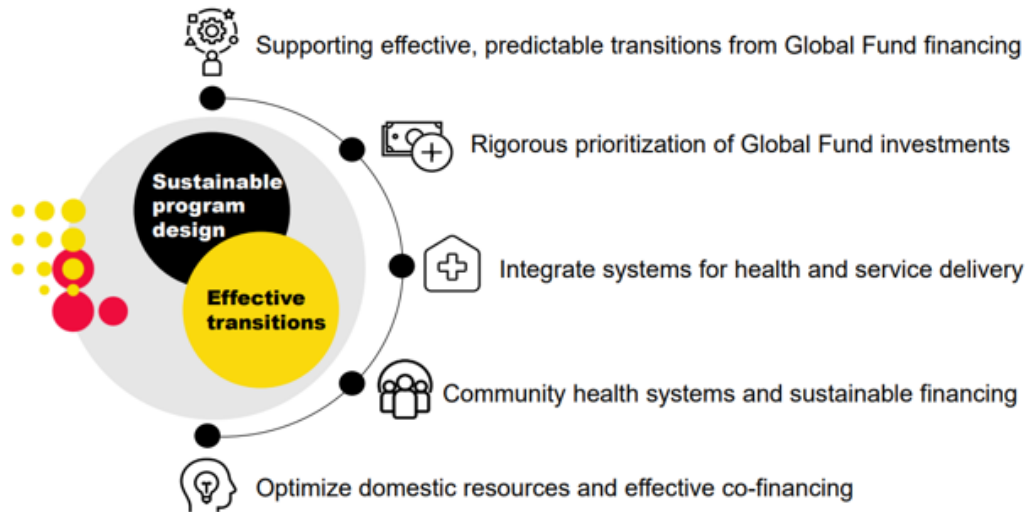
- Further prioritizing Global Fund allocations for the lowest income and highest burden settings, where country-level disease burden acutely affects global progress and domestic resources are highly limited;
- Setting grant cycle-specific transition pathways, intentionally focusing on supporting sustainable approaches to program service delivery and providing transition timelines for a sub-set of countries, allowing for predictable financing;
- Optimizing the use of all available funds through rigorous programmatic prioritization, market shaping, integration, community systems financing.

To implement these adaptations, the Global Fund is taking a differentiated approach to supporting countries and communities, based on disease burden and country economic capacity. GC8 grant life cycle tools and support have been adapted to help deliver these strategic adaptations.

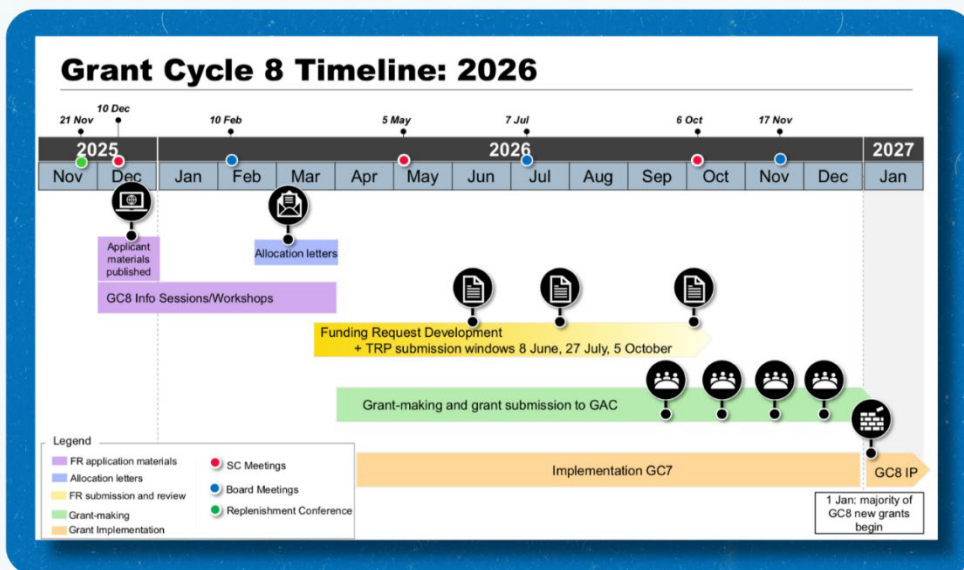


Grant Cycle 8 Timeline

Grant cycle 8 strategic shifts: on the path to self-reliance



The following timeline shows the main milestones for CS8 for 2026.





MIDDLE EAST & NORTH AFRICA
LEARNING HUB



WHAT DOES THIS MEAN FOR THE MENA REGION?

For the 2026-2028 allocation period (Grant Cycle 8 (GC8)), the Global Fund is introducing a set of strategic shifts building on the 2023-2028 Global Fund Strategy, to accelerate pathways to self-reliance, sharpen investment priorities, strengthen value for money and advance access to innovations.

GC8 is the last grant for several countries in the MENA Region such as Algeria, Djibouti, Egypt, Morocco and Tunisia. Accordingly, countries are expected to focus on implementing a robust transition plan to enable fully domestically-funded HIV and TB responses, focusing Global Fund investments and co-financing on the key priorities to transition from Global Fund financing, including sustainable approaches for community systems financing, cost-effective procurement mechanisms, integration of disease responses into the broader health system, and streamlined management models.

In addition, Global Fund are encouraging to consider opportunities for further integration of HIV and TB responses into primary health care services to enhance effectiveness and efficiency. Countries are also encouraged to make targeted investments in cross-cutting health and community systems that strengthen essential functions and infrastructure and enhance engagement and access of affected populations.

To access the full GC8 allocation, countries must meet the co-financing requirements described in their Sustainability, Transition and Co-Financing policy. All countries are expected to make specific commitments to progressively increase financing for key programmatic interventions and cover a growing share of key program costs of national responses, especially those interventions currently financed by the Global Fund. Lower-income countries and lower-middle-income countries are also expected to commit to increased government health expenditure over the allocation period. (25% for Morocco, 10% for South Sudan)



	HIV	TB	Malaria	Total variation from GC7
	Variation from GC7	Variation from GC7	Variation from GC7	
Djibouti	-26.4%	-35.3%	-12.6%	23.5%
Egypt	-19.5%	-16.5%	Not Applicable	18.8%
Eritheria	-19.7%	-10.6%	-10.6%	14.9%
MER	-13.4%	-22.3%	-4.9%	13.7%
Morocco	-47.2%	-25.0%	Not Applicable	42.4%
Multi Country North Africa	-31.2%	Not Applicable	Not Applicable	31.2%
Somalia	-19.7%	-5.2%	-10.8%	10.8%
South Sudan	-12.0%	-2.6%	-6.7%	8.8%
Sudan	5.2%	-13.5%	-9.5%	7.9%

Variation from GC7¹

Resources and Tools:

- STC tool (EANNASO, [English](#))
- Integration tool (Seven Alliance, [English](#))
- What is new in GC8 (GATE, [English](#))
- GC8 guide for trans and gender diverse communities (GATE, [English](#))
- GC8 guide for SW (NSWP, [English](#), [French](#))
- GC8 guide for PWUD/PWID (INPUD, [English](#), *French translation planned*)
- GC8 tool malaria (CS4ME, [English](#), [French](#))

¹ https://www.dataetec.org/projects/allocation_letters/