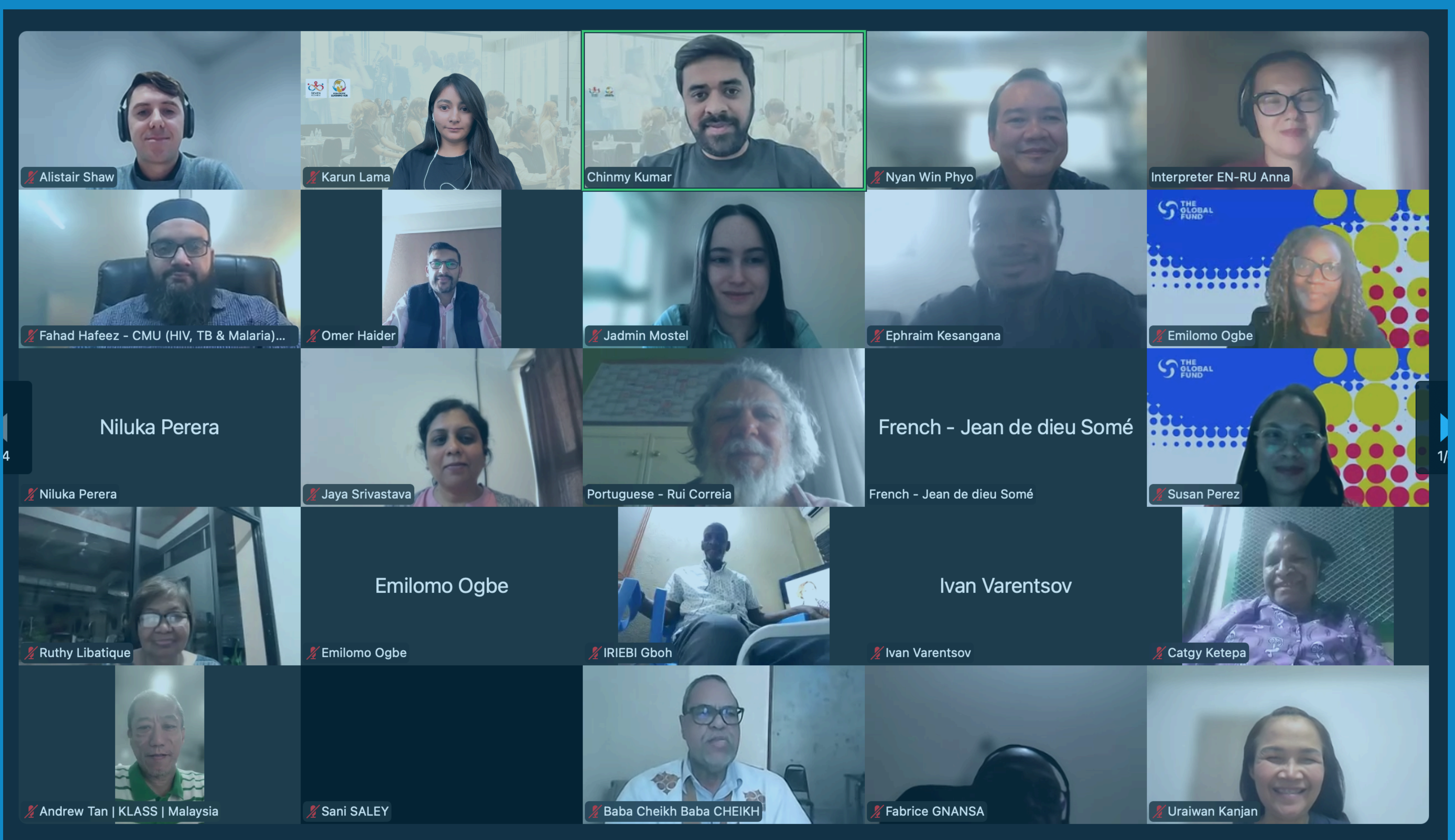


# A Brief Guide

## “Getting Friendly with Global Fund Data: Using Global Fund Data to Strengthen Engagement in the Grant Cycle”





# Background

The Joint learning hub webinar on "Getting Friendly with Global Fund Data: Using Global Fund Data to Strengthen Engagement in the Grant Cycle" brought together communities and civil society from across the globe on November 12, 2025. It was organized by the Asia Pacific Regional Learning Hub (APRLH) in collaboration with other regional learning hubs. The joint learning hub webinar aims to promote and support communities to be informed, evidence-driven actors in GC7 implementation and GC8 preparations, ensuring that Global Fund investments are responsive, transparent, and impactful. The specific objectives of the webinar are to:

- Increase awareness among communities and civil society on Global Fund data repositories, what types and forms of data are available, and how the data can be accessed.
- Strengthen practical skills to identify and filter available Global Fund data to be applied in different contexts, such as in oversight discussions, funding request development, and program monitoring and implementation.
- Provide practical guidance on how to locate and apply relevant data to strengthen community engagement and accountability.

The webinar lasted 1 hour 30 minutes in duration and is available on YouTube (English Version). Link :

[https://www.youtube.com/watch?v=NJtdlO7gZqo&list=PLdAxoqQNsvfd85Ea0adPnoK-IM8\\_m9aSd](https://www.youtube.com/watch?v=NJtdlO7gZqo&list=PLdAxoqQNsvfd85Ea0adPnoK-IM8_m9aSd)

Key speakers from the Global Fund were included

- (1) Jadmin Mostel (Data Analyst, CRG Department) [00:05:20–00:36:08]
- (2) Emilomo Ogbe (Technical Advisor, Gender) [00:43:00–00:53:00]
- (3) Alistair Shaw (Technical Advisor, Human Rights) [00:57:35–01:07:43]
- (4) Susan Perez (CLM Specialist) [01:11:00–01:17:04]

The webinar highlighted 5 scenarios which showcase practical examples of how to access data in the Data Explorer:

- Scenario 1 on Grant tab: TB Community, Indonesia [00:12:55–00:19:45]  
Scenario 2 on Geography tab: Malaria Communities, Mali [00:20:57–00:25:26]  
Scenario 3 on Access to Funding: CCM Member, Kenya [00:26:09–00:27:26]  
Scenario 4 on Results trends: HIV Communities, Ukraine [00:28:10–00:30:29]  
Scenario 5 on Datasets: Northern Africa, TB Communities [00:31:09–00:33:54]

***\*Note: The above timestamps were of webinar recording (English Version)\****



# About The Brief Guide

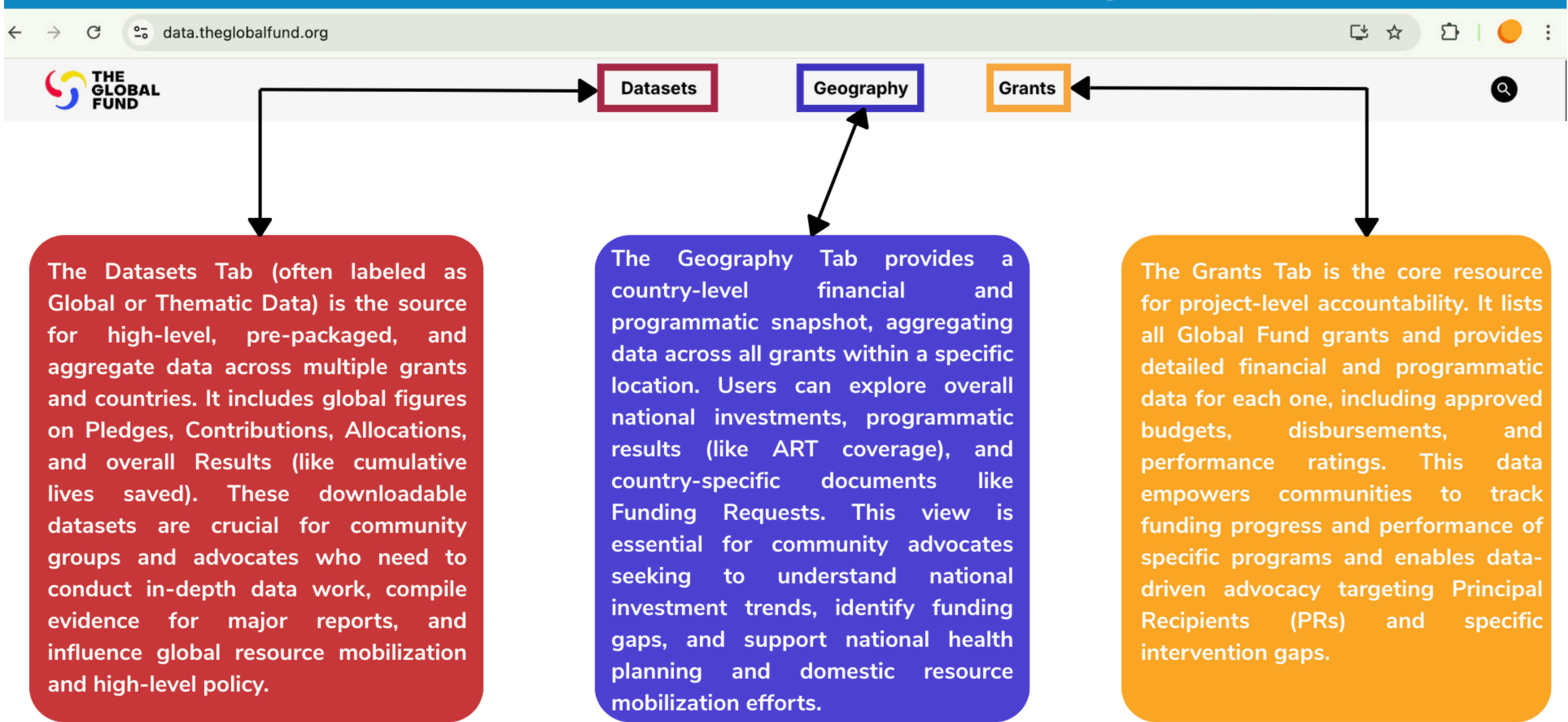
This resource is built upon the key highlights and practical guidance shared during a webinar organised by Asia Pacific Regional Learning Hub (APRLH). The webinar "Getting Friendly with Global Fund Data: Using Global Fund Data to Strengthen Engagement in the Grant Cycle," was held on November 12, 2025.

Global Fund produces and shares a wealth of data. However due to a range of reasons including the complexity of data, communities and civil society find it difficult to access and use these data in their engagement at country, regional and global levels. Therefore, this brief guide provides insight to accessing Global Fund data and using them to strengthen community-led advocacy and engagements.

The purpose of this brief guide is to increase awareness and accessibility of the public-facing Global Fund Data Explorer online site among communities and civil society. Data Explorer can be used to identify and filter available Global Fund data so that they can be applied in different contexts to strengthen community engagement, such as in CCM discussions, country dialogues, , funding request development, and program monitoring and implementation, among others.

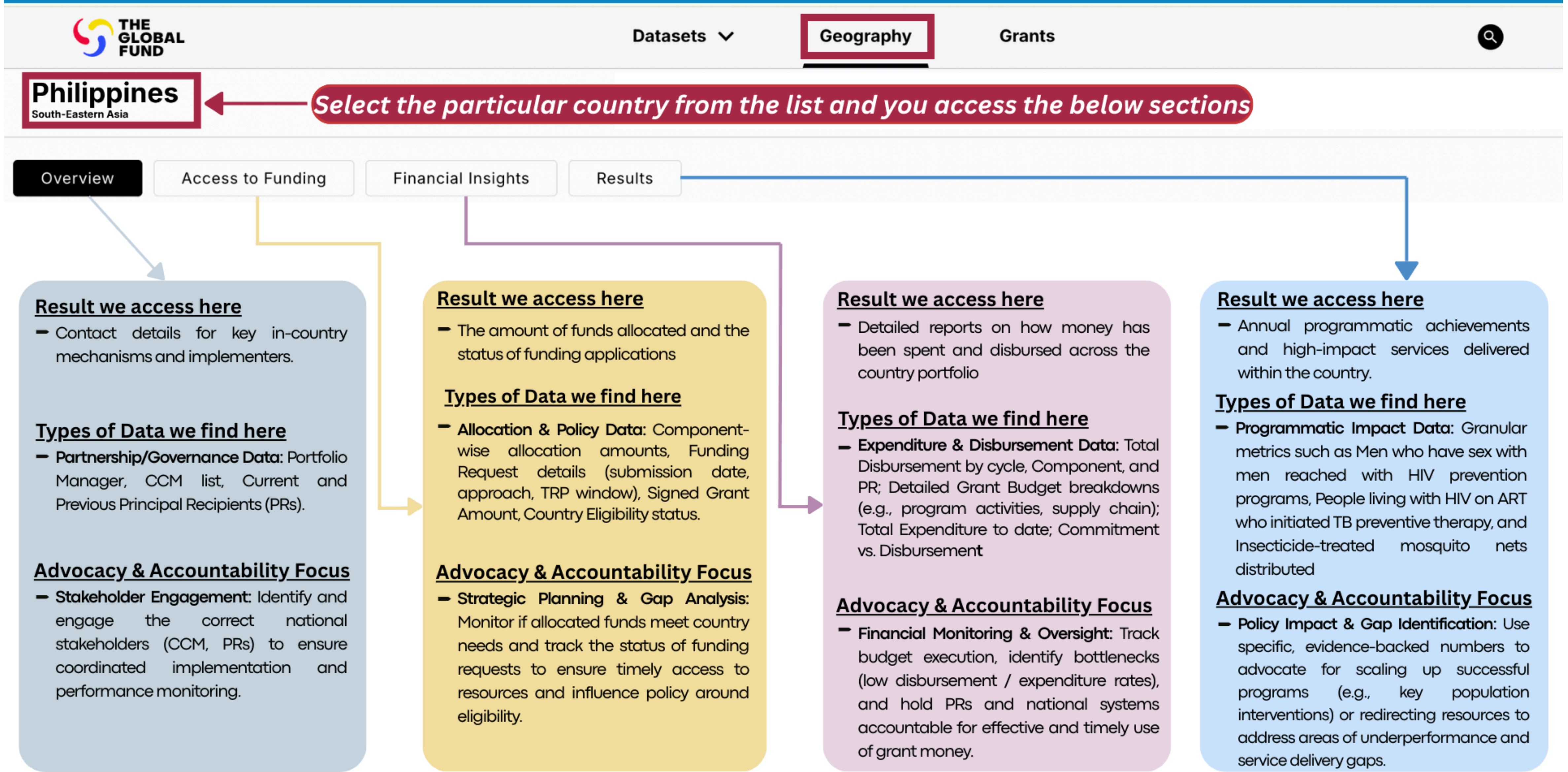
Global Fund Data explorer site - [The Data Explorer - Home](https://data.theglobalfund.org)

## What's in Data Explorer Homepage?

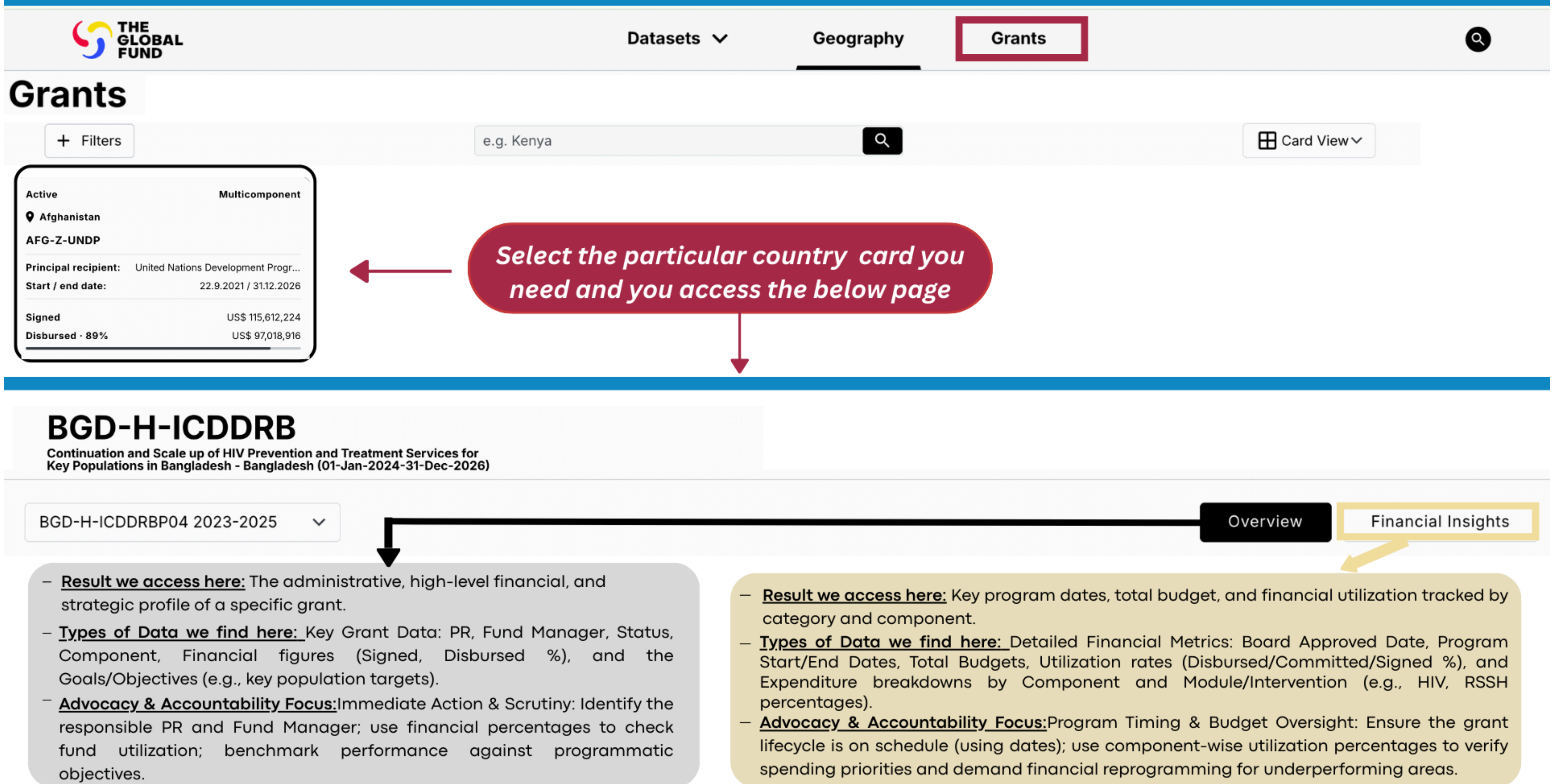




# What is within Geography Tab ?



# What is within Grants Tab ?





---

## Links to other Data Portals:

1. [WHO Data Portal: Country-by-country health statistics, burden, financing, system performance](#)
  2. [TB Financing Dashboard](#): NTP and WHO estimates on disease financing
  3. [Global Health Expenditure Database \(GHED\)](#): Health expenditure by source and disease
  4. [UNAIDS: Global/AIDS country dashboards for HIV epidemiology, program status, human rights, and SDG indicators](#).
  5. [OECD Creditor Reporting System: Comprehensive database for official development assistance including health, TB, and HIV](#).
  6. [PPT shared during webinar](#) - Instructions for each slide about Data Explorer are written in the notes
  7. [Webinar Recording](#)
- 

## Links to other related documents:

### 1. [Assessment:](#)

- [Malaria Matchbox Assessments](#)
- [CRG TB Assessment](#)
- [UNAIDS Gender Assessment](#)
- [Integrated Biological and Behavioral Surveillance survey](#)
- [WHO Program reviews \(HIV, TB, Malaria, SRMNACH\)](#)
- [GAVI Gender Assessment](#)
- [Gender Equality Marker \(Internal to the Global Fund\)](#)

### 2. [Gender data portals](#)

- [World Bank Gender Data Portal](#)
- [Global AIDS Monitoring Survey](#)
- [OECD Gender gap portals](#)
- [UNDESA Minimum set of Gender Indicators](#)
- [Demographic Health Survey](#)

### 3. [Academia](#)

- [SVRI- GBV](#)
- [Gender and Public Health emergencies](#)
- [Gender and TB- Liverpool School of Tropical Medicine](#),
- [Gender, Health and Development – UNU University](#)
- [Gender and Malaria - Global Malaria and Gender Community of Practice \(CoP\)](#)



# Testimonials

“The webinar helped guide us in identifying relevant and important Global Fund data for advocacy and practical use. Moreover, we now have clearer ideas on how to apply these data in practice and explore additional data sources—especially for Community-Led and Participatory Assessments—that can strengthen policy advocacy, implementation design, and research.”

**-Monthiporn Punya, CSO Platform**



“I found the Joint LHs Webinar titled Getting Friendly with Global Fund Data: Using Global Fund Data to Strengthen Engagement in the Grant Cycle to be highly beneficial and effective for HIV activists and advocates in the Asia Pacific region. The guidance provided by colleagues from the Global Fund on how to use the Data Explorer was particularly valuable. It helped clarify how to identify information from previous grant cycles, including funding requests, resource allocations, and other key data

This knowledge will enable community members to use these data points to continue conversations with governments and to advocate for community-centred policies, especially through Country Coordinating Mechanisms (CCMs).

I also found the presentation on gender sensitivity very useful. The speaker explained where gender-related data can be found, including resources from UN Women, and she emphasized the importance of applying a gender-transformative lens in programmes related to HIV, TB, and malaria.”

**- Jeremy, Youth LEAD**

